

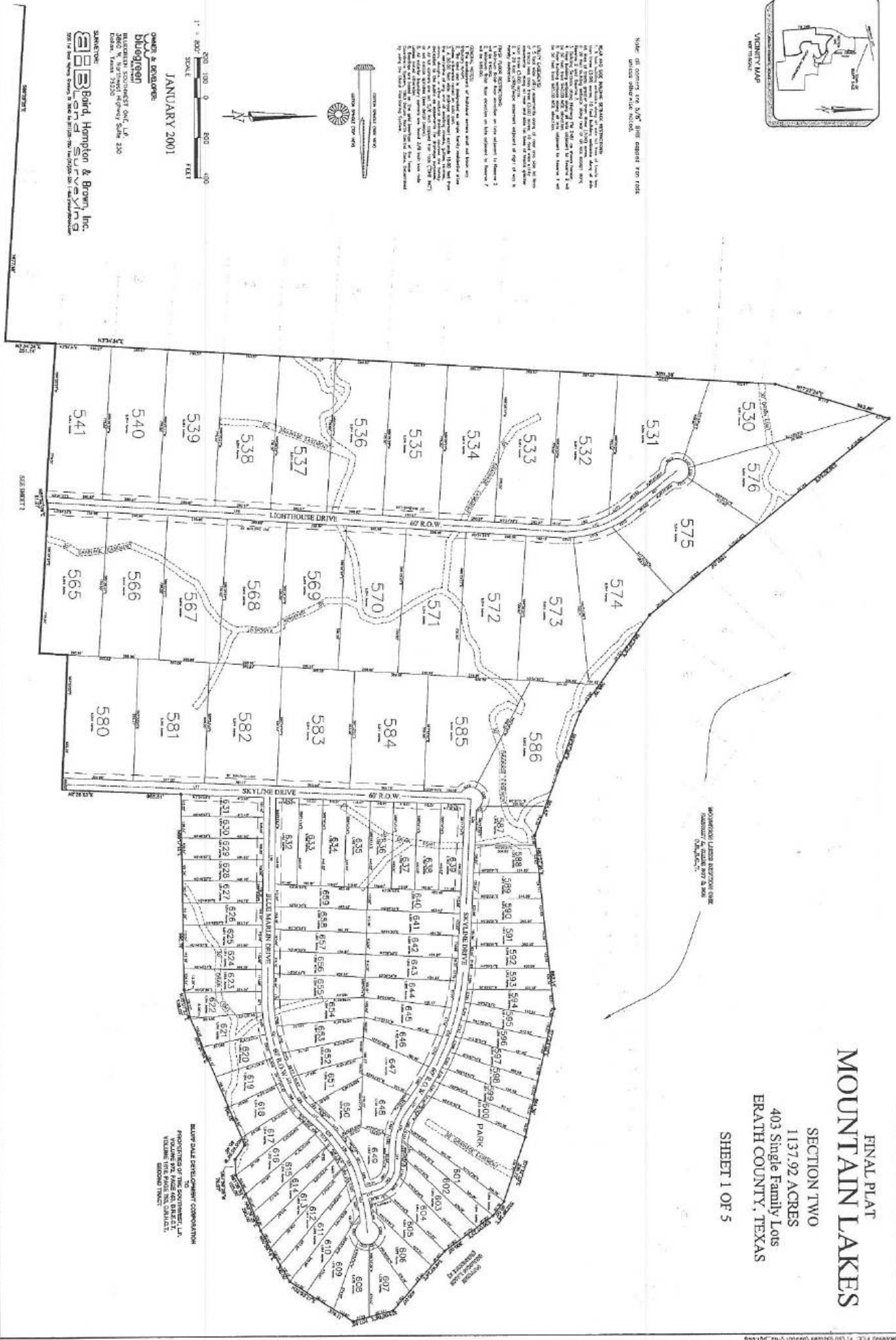
NAME OF COMPANY FOR PLAN: [Blank] DATE: [Blank] SHEET: [Blank]

FOR ALL THE ABOVE DESCRIBED LOTS, THE SURVEYOR HAS RECONCILED THE RECORDS OF THE COUNTY CLERK OF TARRANT COUNTY, TEXAS, AND HAS FOUND THAT THE RECORDS OF THE COUNTY CLERK ARE CORRECT AND ACCURATE. THE SURVEYOR HAS ALSO RECONCILED THE RECORDS OF THE COUNTY CLERK OF TARRANT COUNTY, TEXAS, AND HAS FOUND THAT THE RECORDS OF THE COUNTY CLERK ARE CORRECT AND ACCURATE. THE SURVEYOR HAS ALSO RECONCILED THE RECORDS OF THE COUNTY CLERK OF TARRANT COUNTY, TEXAS, AND HAS FOUND THAT THE RECORDS OF THE COUNTY CLERK ARE CORRECT AND ACCURATE.



OWNER & DEVELOPER:
Bluegreen
 BLUEGREEN COMMUNITIES, INC.
 10000 W. LOOP SOUTH, SUITE 300
 DALLAS, TEXAS 75243

DATE: JANUARY 2001
 SURVEYOR:
Bald, Hampton & Brown, Inc.
 2201 W. Loop South, Suite 300, Dallas, Texas 75243



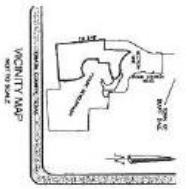
FINAL PLAT
MOUNTAIN LAKES

SECTION TWO
 1137.92 ACRES
 403 Single Family Lots
 ERAITH COUNTY, TEXAS

SHEET 1 OF 5

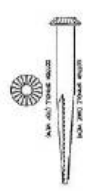
PLAT SHALL BE DEVELOPMENT CORPORATION
 PROJECTED BY THE SURVEYOR, L.A.
 VOLUNTARILY MADE THIS DAY, JANUARY
 SECOND 2001.

3-17



Note: all corners are 3/4" x 3/4" cast iron rods
 unless otherwise noted.

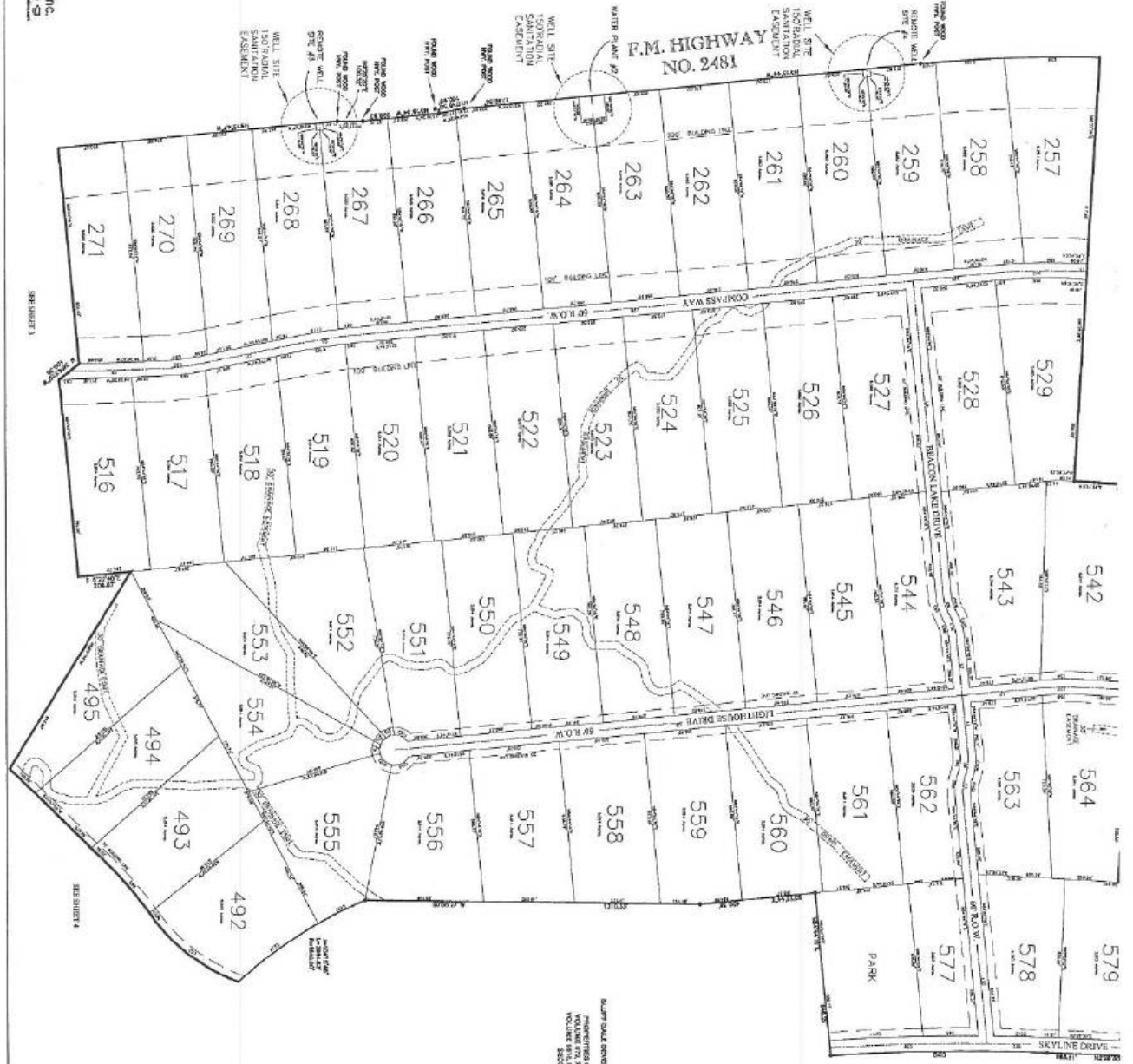
FOR THE RECORD, THE LOTS SHOWN ON THIS PLAN ARE THE SAME AS SHOWN ON THE PREVIOUS PLANS FOR THIS PROJECT. THE ONLY CHANGES TO THE PREVIOUS PLANS ARE THE CORRECTIONS TO THE LOTS SHOWN ON THIS PLAN. THE CORRECTIONS WERE MADE TO CORRECT THE LOTS SHOWN ON THE PREVIOUS PLANS TO THE ACTUAL LOTS SHOWN ON THIS PLAN. THE CORRECTIONS WERE MADE TO CORRECT THE LOTS SHOWN ON THE PREVIOUS PLANS TO THE ACTUAL LOTS SHOWN ON THIS PLAN. THE CORRECTIONS WERE MADE TO CORRECT THE LOTS SHOWN ON THE PREVIOUS PLANS TO THE ACTUAL LOTS SHOWN ON THIS PLAN.



JANUARY 2001

OWNER & DEVELOPER:
Bluebonnet
 BLUEBONNET DEVELOPMENT ONE, L.P.
 2850 W. NORTHWIND HIGHWAY SUITE 200
 DALLAS, TEXAS 75220

STATE OF TEXAS
 COUNTY OF TARRANT
 DISTRICT OF TARRANT
 SURVEYOR
Burd, Hampton & Brown, Inc.
 2805 West Valley Street, Suite 100, Dallas, Texas 75220

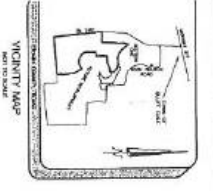


FINAL PLAT
MOUNTAIN LAKES

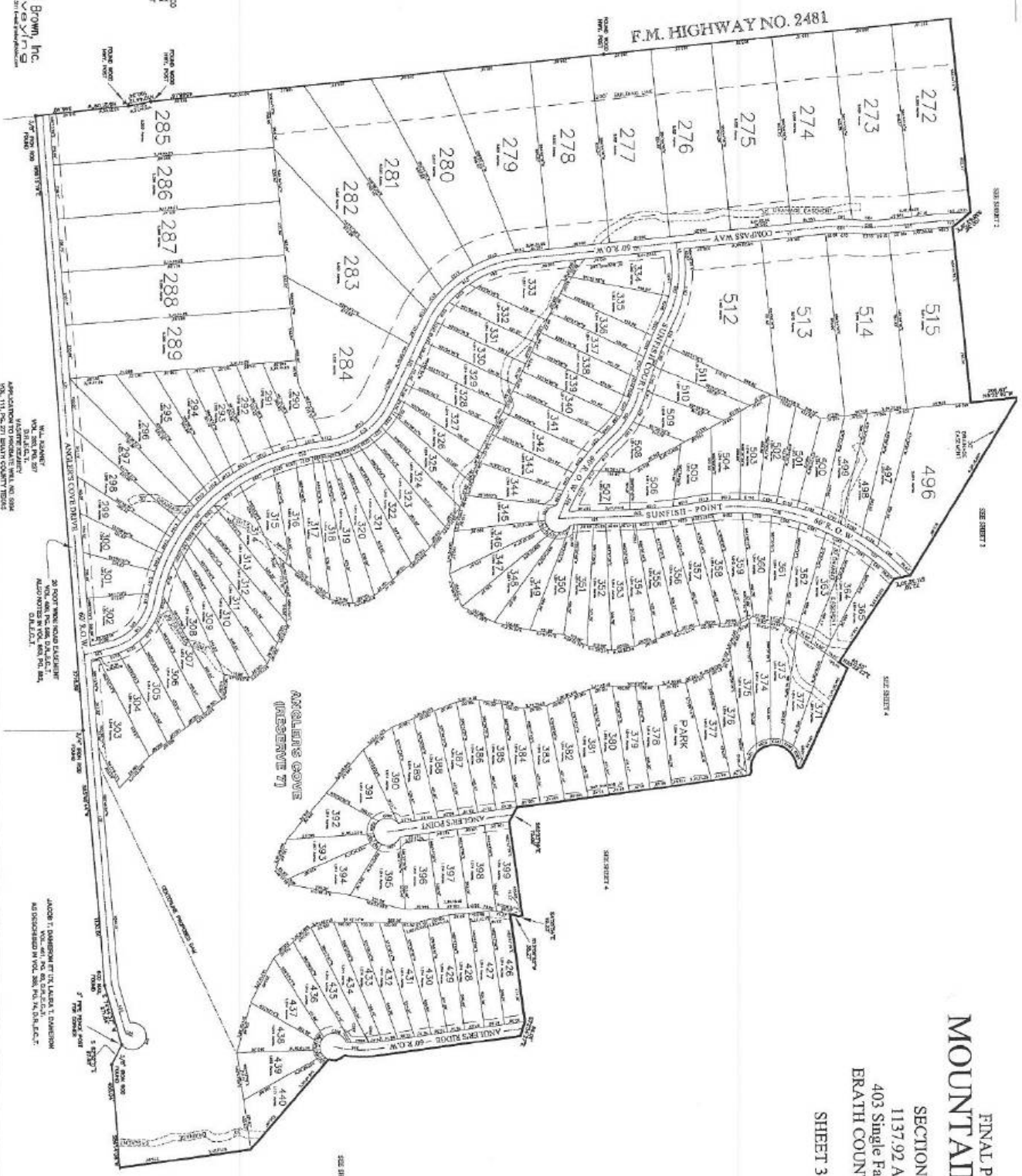
SECTION TWO
 1137.92 ACRES
 403 Single Family Lots
 ERATH COUNTY, TEXAS
 SHEET 2 OF 5

ALL INFORMATION CONTAINED
 HEREIN IS UNLAWFUL TO REPRODUCE
 WITHOUT THE WRITTEN PERMISSION
 OF THE SURVEYOR.

341C



FINAL PLAT
MOUNTAIN LAKES
 SECTION TWO
 1137.92 ACRES
 403 Single Family Lots
 ERATH COUNTY, TEXAS
 SHEET 3 OF 5



2000 100 0 100 200
 SCALE
 FEET

JANUARY 2001

OWNER & DEVELOPER
bluegreen
 BLUEGREEN SOUTHWEST ONE, L.P.
 2800 W. NORTHWEST HIGHWAY SUITE 230
 DALLAS, TEXAS 75220

SRVANTAGE
Boyd, Hampton & Brown, Inc
SURVEYING
 1800 West Ogden, Suite 100, Ft. Worth, Texas 76102-3000
 817-335-1100

2113

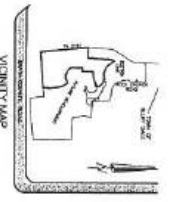
APPLICATION TO RELOCATE WILL BE MADE
 WITHIN THE 90 DAY PERIOD
 AFTER THE DATE OF THIS PLAT
 AND DISCLOSED IN VOL. 288, NO. 34, D.A.E.C.T.

30 FOOT WIDE ROAD DEDICATED
 TO THE PUBLIC USE OF THE
 STATE OF TEXAS
 AS SHOWN ON THIS PLAT

30 FOOT WIDE ROAD DEDICATED
 TO THE PUBLIC USE OF THE
 STATE OF TEXAS
 AS SHOWN ON THIS PLAT

30 FOOT WIDE ROAD DEDICATED
 TO THE PUBLIC USE OF THE
 STATE OF TEXAS
 AS SHOWN ON THIS PLAT

30 FOOT WIDE ROAD DEDICATED
 TO THE PUBLIC USE OF THE
 STATE OF TEXAS
 AS SHOWN ON THIS PLAT



Note: all corners are 5/8" 300 copper iron rods unless otherwise noted.

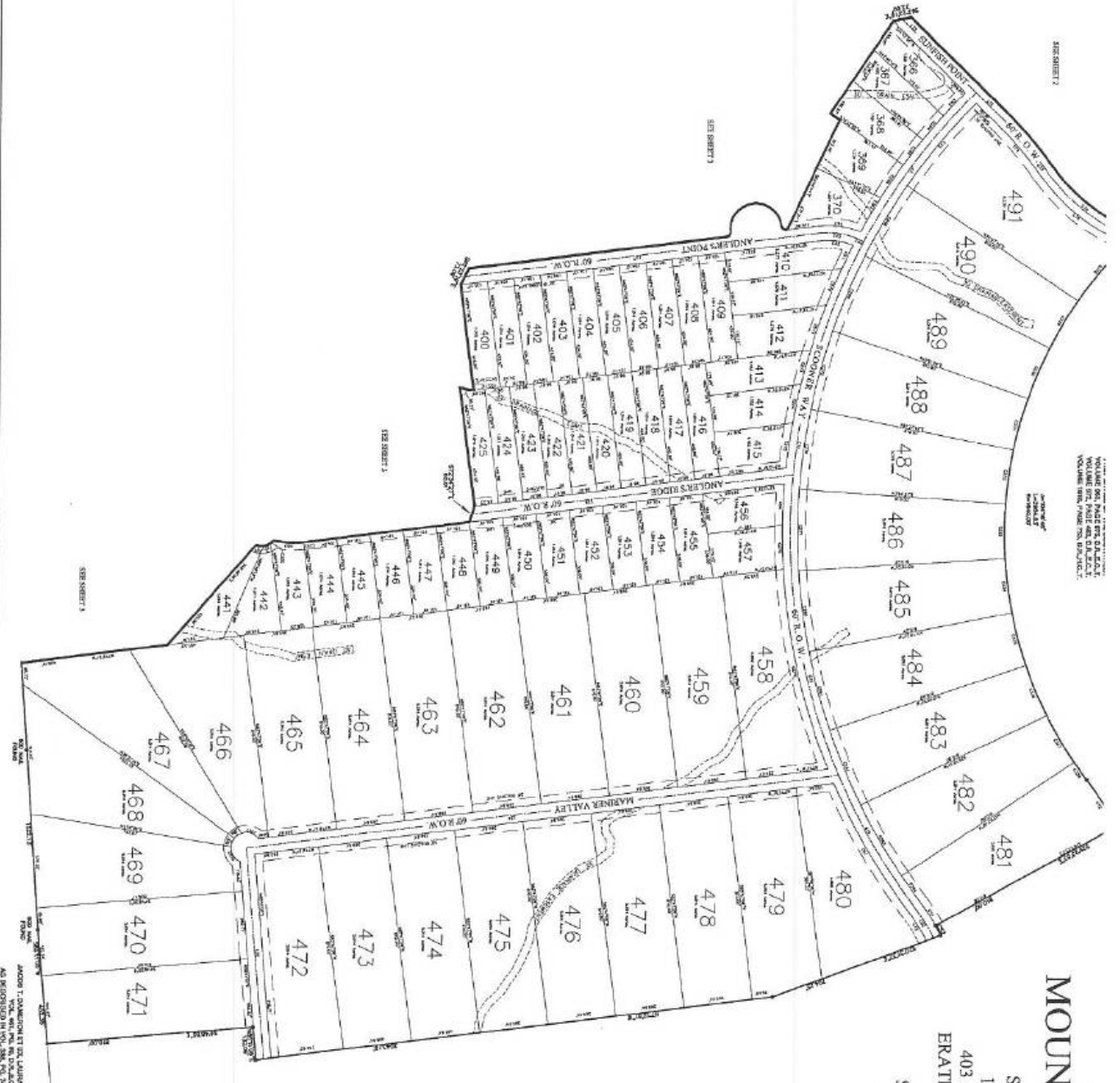
FOR AND FOR BOUND SURVEY RECORDS:
 This plat is based on a survey of the land shown here made by the Surveyor General of Texas on the 15th day of August 1882. The survey was made by the Surveyor General of Texas and is recorded in the Public Records of the State of Texas, Volume 10, Page 100. The survey was made by the Surveyor General of Texas and is recorded in the Public Records of the State of Texas, Volume 10, Page 100. The survey was made by the Surveyor General of Texas and is recorded in the Public Records of the State of Texas, Volume 10, Page 100.



OWNER & DEVELOPER:
DUQUESNE
 BLUEGROVE
 BLUEGROVE SOUTHWEST ONE L.P.
 Dallas, Texas 75220

SYNOPSIS:
Bobd Hampton & Brown, Inc.
 225 East Commerce Street, Suite 1100, Dallas, Texas 75201

JANUARY 2001



FINAL PLAT
MOUNTAIN LAKES

SECTION TWO
 1137.92 ACRES
 403 Single Family Lots
 ERATH COUNTY, TEXAS
 SHEET 4 OF 5

BLIMP HOLD DEVELOPMENT CORPORATION
 REPRESENTING THE SURVIVOR
 VOLUME 108 PAGE 100-101
 PUBLIC RECORDS OF THE STATE OF TEXAS
 COUNTY OF ERATH, TEXAS

JACOB T. CAMPBELL ET AL. LARSEN T. CAMPBELL
 AS WITNESSES IN WITNESS WHEREOF, THEY HAVE SIGNED THESE PLATS AT DALLAS, TEXAS, ON JANUARY 10, 2001.

307a

